



# Revelstoke *Ready*

# The Steps

## Program Overview

- Website
- Stickers and Draw

## Preparation

- Grab & Go Kit
- Critical Business Information
- Insurance
- Emergency Responder Package

## Knowing What to do When disaster strikes

- Key Information Sites
- Launching Communications

## Getting Back Up and Running

- Insurance
- Business Supports
- Mental Wellness Supports

# Program Overview



**REVELSTOKE.**

———— CHAMBER OF COMMERCE ————

# Revelstoke Ready

- ▶ <https://communityfuturesrevelstoke.com/revelstoke-ready/>
- ▶ Why this is important.
- ▶ What we've assembled & what we can assist with.
- ▶ Paper versus Cloud
- ▶ Stickers & Draw

# Preparation



**REVELSTOKE.**

———— CHAMBER OF COMMERCE ————

# Step #1 – Before Disaster Strikes

Grab & Go Kit

Critical Business  
Information

Insurance

Emergency  
Responder Package

# Grab & Go

- ▶ What is it?
- ▶ Importance of one at your place of business



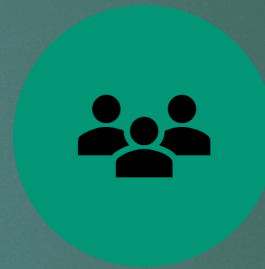
# Critical Business Information



SUPPLIERS



CUSTOMERS



EMPLOYEES



KEY ACCOUNT  
NUMBERS,  
PASSWORDS, ETC.





# Evacuation Guide

- ▶ Before
- ▶ Alert
- ▶ Order
- ▶ Rescind

# Insurance

- ▶ Checking to make sure you the right insurance
  - ▶ Business Interruption/extra expense insurance
  - ▶ Cyber or privacy breach coverages
  - ▶ Enough coverage? What does it cover?
  - ▶ Power interruption
  - ▶ Rebuild – does it cover by-laws? Are you covered for replacement cost OR actual cash value?
  - ▶ What type of documentation will my insurance company need to see?



# Emergency Responder Package

- ▶ Works Both Ways
  - ▶ Does the city know how to get in touch with you?
  - ▶ How will you get the most current information?



# When Disaster Strikes



**REVELSTOKE.**

CHAMBER OF COMMERCE

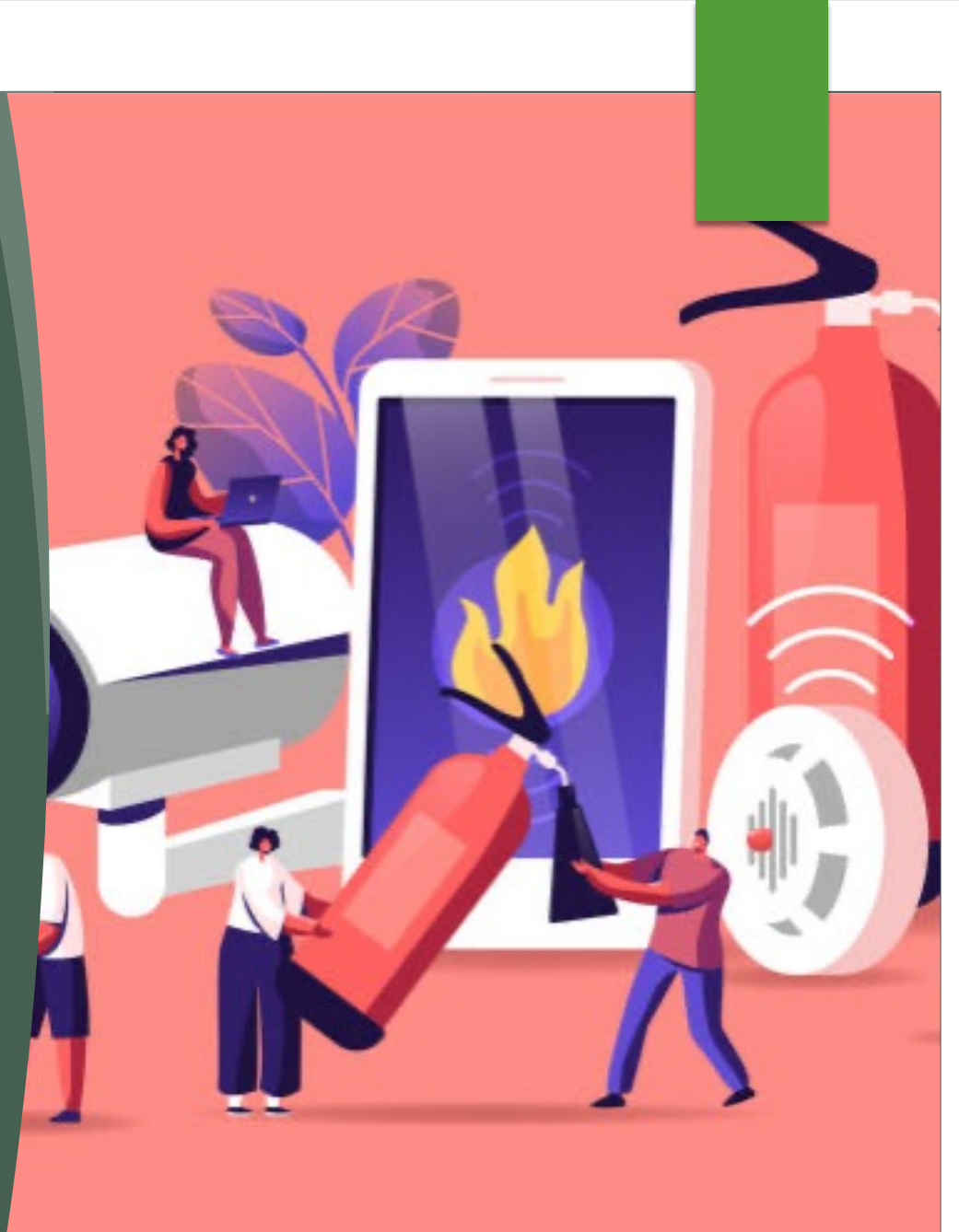
## Step #2 - In the Middle of It

- ▶ Key Information Sites
- ▶ Launching Communications



# Key Information Sites

- ▶ Like the Emergency Responder Package but more
- ▶ Where will this live?



## Crisis Communication Plan

- ▶ Who is going to do what?
- ▶ Clarity of message
- ▶ Up-to-date





Getting  
Back to  
Business



# Step #3 – Back up and Running



INSURANCE



BUSINESS  
SUPPORTS

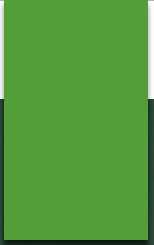


MENTAL WELLNESS  
SUPPORTS

# Insurance

- ▶ When do you contact?
- ▶ What do they need?





# Business Supports

# Mental Wellness Supports

- ▶ Take care of the basics
- ▶ Be kind to yourself
- ▶ Give and accept support
- ▶ Get back to your daily routine
- ▶ Take a break
- ▶ When to seek more help...



Questions?



**REVELSTOKE.**

———— CHAMBER OF COMMERCE ————